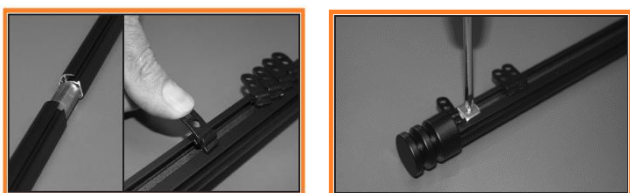


# DIY Curtain Install Guide

Thanks for choosing Urban Curtains + Blinds for your new curtains. To help you out we have created this easy to follow install guide.

## Step 1.

Lay your track face down in front of the window. If you have two pieces of track, connect them with the joiner. Insert the gliders as pictured. Position one glider against the end cap/finial. Insert an End Stop. This secures the end of the curtain to the track. Repeat for the other end.



## Step 2.

To find the height to install your bracket, measure from the floor up and mark the height of your curtain.



## Step 3.

Mark the width of where you would like your track to sit. Generally this is centred with equal length either side of the window frame. However if your curtain is going to be stacked to one side e.g. the right, allow for at least 100mm on the right of the window frame.

## Step 4.

Now you will need to mark where your brackets will be installed on either end of your track. Normally it is a maximum of 200mm in from the end. Ensure these are level and that you are screwing into studs. Make sure the screw is centred to the bracket hole. This allows you to adjust the height if needed by simply loosening the screw and sliding the bracket up or down.

urban  
CURTAINS + BLINDS



## Step 5.

Measure the distance between the two bracket positions and divide this by how many brackets are left. This gives you the distance between each bracket. Screw the brackets to the wall using the screws provided.

## Step 6.

Place the track over the front of the brackets so that the arms of the bracket slide into the slot on the track. Gently push the front of the track in front of each bracket until you hear a "click". Your track is now secure. Don't worry if it's not completely perfect, you can slide the track a little once it's clipped in.

## Step 7.

Hang your curtain by sliding the metal pins into the glide holes.



## TIPS:

- \*If you need to shorten the track, ensure you take equal amounts off from both ends using a hack saw.
- \*The end caps stay on with the help of a small flare on the end of the track. To reattach, place the end cap over this part first then push on the rest of the end cap with an open palm.
- \*Make sure at least 1 bracket on each end are fixed into wood, as this is where the weight will be when your curtains are open.

Thanks,  
From the Team at  
Urban Curtains + Blinds